

Construction & Engineering

McLarens Construction & Engineering adjusters understand that the size, location, or complexity of a loss calls for special capabilities and skills. McLarens Construction & Engineering team includes industry leaders who have handled claims arising from some of the highest-profile incidents in recent years.

However large or complex a loss, wherever you are in the world, McLarens Construction & Engineering adjusters can put together a multi-skilled team to respond rapidly and decisively.

Our specialist technical knowledge covers:

- Construction and Erection All Risks
- Engineering – Civil, Electrical and Mechanical
- Construction Liability
- Professional Indemnity
- Machinery Breakdown
- Construction and Mining Plant and Equipment
- Construction Defects
- Associated BI and ALOP/DSU covers

We can quickly put together a loss-specific team with all the expertise you need, including:

- Loss Adjusters
- Quantity Surveyors
- Engineers
- Project Managers
- Forensic Accountants
- Forensic Scientists

Our Approach

McLarens has the global reach, experience and contacts to bring together all the necessary resources when you need them most. Put your major loss in the safe hands of our Construction & Engineering Group to swiftly confirm cause, coverage and quantum in complex or contentious matters and to bring claims to a resolution with efficiency and precision.

Key Personnel



Stewart Kneale BEng (Hons), MCIQB, MaPS, Cert CII, AICLA (aff) | Brisbane

EXECUTIVE LOSS ADJUSTER
 +61 (0) 439 959815 | Mobile
 +61 (0) 73367 5900 | Office
 stewart.kneale@mclarens.com
[Profile](#)



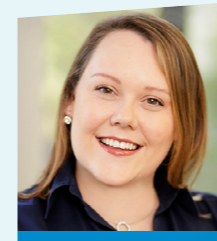
Paul Martelli BEc, ACLA, ANZIIF (Snr Assoc) CIP | Perth

EXECUTIVE LOSS ADJUSTER
 +61 (0) 427 985 227 | Mobile
 +61 (0) 1300 780 748 | Office
 paul.martelli@mclarens.com
[Profile](#)



David Austin B.Tech (Bld.Surv), ANZIIF (Assoc), CIP | Melbourne

EXECUTIVE LOSS ADJUSTER
 +61 (0)427 159 155 | Mobile
 +61 1300 780 748 | Office
 david.austin@mclarens.com
[Profile](#)



Claire Lees ANZIIF (Snr Associate) CIP, ACLA (Associate) | Brisbane

SENIOR LOSS ADJUSTER
 +61 (0)429 159 776 | Mobile
 +61 (0)7 3367 5900 | Office
 claire.lees@mclarens.com
[Profile](#)



Melanie Richardson BA/LLB, ANZIIF (Snr Associate) CIP, ACLA (Associate) | Brisbane

SENIOR LOSS ADJUSTER
 +61 (0)4 1845 6349 | Mobile
 +61 (0)7 3367 5900 | Office
 melanie.richardson@mclarens.com
[Profile](#)



Stephen Christie | Brisbane

TRAINEE LOSS ADJUSTER
 +61 (0)439 694 135 | Mobile
 +61 (0)7 3367 5900 | Office
 stephen.christie@mclarens.com

Australia Locations



Brisbane

Suite 3A, Level 3, 5 Cribb Street
 Milton, Queensland 4064
 1300 780 748 | Office
 brisbane@mclarens.com

Sydney

146 Arthur St, Level 1
 North Sydney, NSW 2060
 1300 780 748 | Office
 sydney@mclarens.com

Melbourne

Level 8, Suite 401, 45 William Street
 Melbourne VIC 3000
 1300 780 748 | Office
 melbourne@mclarens.com

Byron Bay

Office 16, 2 Porter Street
 Byron Bay NSW 2481
 1300 780 748 | Office
 byronbay@mclarens.com

Perth

Level 1, 1315 Hay Street
 West Perth WA 6872
 1300 780 748 | Office
 perth@mclarens.com

Newcastle

Suite 5, 27 Annie Street
 Wickham NSW 2292
 1300 780 748 | Office
 newcastle@mclarens.com

Adelaide

5-7 King William Road
 Unley SA 5061
 1300 780 748 | Office
 adelaide@mclarens.com

Canberra

Level 5, Suite 8
 490 Northbourne Avenue
 Dickson ACT 2602
 +61(0)499 737 860 | Phone

Port Lincoln

PO Box 146
 Tumby Bay
 SA 5605
 +61 (0) 1300 780 748 | Phone