

Australasia & New Zealand


Adjusting Capabilities
Complex Loss and Natural Resources

Overview

Our Approach and Experience

Lloyd Warwick International (Australia) Pty Ltd is part of the global Natural Resources Adjusting firm, Lloyd Warwick International (LWI), a specialist loss adjusting and claim management company serving the international insurance markets. Our staff have extensive industry and adjusting experience gained over many years on a diverse range of losses including onshore and offshore energy, mining, marine, ports and terminals, traditional power generation, renewables and special risks.

We employ qualified insurance engineering adjusters focused on complex operational and construction losses. Working in collaboration with the Insureds, their Insurers, subject matter experts, and brokers, LWI will formulate a claim management plan to assist in detailed cause investigation (to establish policy trigger and response), mitigating complex losses, facilitating progress payments, and ultimately drive indemnified claims to an efficient conclusion. Located across the world at strategic hubs, the LWI team can quickly service any location regardless of geography.



/// We employ qualified insurance engineering adjusters focused on complex operational and construction losses.

Our Culture and Collaboration

Our offices are designed to enable the collaborative management of claims with Insurers and Insureds to facilitate the settlement of major and complex losses. Our technical adjusting staff function as strategic loss managers, offering the security and confidence that every aspect of large claims will be planned, organised, and executed at the highest levels of industry, technical, and regulatory standards.

We efficiently attend remote sites involving complex or large loss regardless of location. In addition, our world-wide base of resources gives us the capacity and capabilities to handle concurrent complex losses.

We ensure excellent communication between all parties by being transparent and sharing all relevant information. Additionally, structured reserve presentation, cash flow tracking and interim payment forecasting help improve decision making and ultimately reduce the cost of claims. Utilising state of the art technology and systems, we take great pride in our document management and dissemination of information to interested parties.

We earn our customer's confidence through our expertise, innovation, performance and integrity and seek long term partnerships. Please feel free to reach out to any of our Adjusters for further information.

Our Claims Experience has Included the Following Assets

Mining

- Open pit haul roads
- Underground collapses
- Minerals processing plant
- Tailings dams
- Heavy mobile plant
- Rail & port
- Theft of bullion

Energy & Refining

- Upstream assets (platforms, FPSOs, umbilicals, flowlines and subsea hardware)
- Onshore & offshore pipelines
- Onshore refineries and process equipment
- Drilling / control of well
- Pollution liability
- Contamination

Power (Traditional and Renewable)

- Turbines and generators
- Transformers
- Substations & switchrooms
- Wind and solar farms
- Transmission equipment
- Pressure vessels and tanks

Misc. Engineering & Industry

- Heavy equipment
- Infrastructure
- Expert witness reviews
- Professional indemnity matters
- Naval architecture / hull and machinery
- Defective engineering design
- Defence
- Rail transport
- Shipyard liability
- Ports & terminals
- ROV / AUV / glider equipment etc.

Our Team

Our goal is to provide dynamic professional services to the international insurance and reinsurance markets, placing special emphasis on technical excellence and quality of service. We have brought together a dedicated group of specialist adjusters, multi-disciplined engineers and accountants who are widely recognised throughout the International insurance community for working in co-ordinated teams to provide market leading services to our clients. Our Australian team is drawn from various multidisciplinary backgrounds and regions with experience gained from London, Asian, African, US and Australian markets.

LWI Office Addresses:

Lloyd Warwick International (Sydney)

Level 1, 146 Arthur Street, North Sydney, NSW, 2060, Australia
+61 (2) 8218 9543 | Office

Lloyd Warwick International (Perth)

Level 1, 1315 Hay Street, West Perth, Western Australia 6005
+61 861 643 060 | Office

Sydney



Dominic Campbell
BENG (HONS), DIP CII,
ANZIIF (SNR ASSOC) CIP
SENIOR ENERGY &
RESOURCES ADJUSTER

+61 484 250 077 | Mobile
dominic.campbell@lloydwarwick.com

[Click to View Web Profile](#)

Dominic is a dual-qualified Chemical Engineer and Loss Adjuster at LWI, based in Sydney, Australia. His experience working as a professional Engineer throughout New Zealand and abroad allowed Dominic to work on a number of complex losses with substantial property damage and business interruption elements throughout Europe, Africa, the US and Australasia. His areas of focus include Onshore Energy, Renewables and Power generation, Mining, and Infrastructure risks.



Benjamin Jones
MENG
DIRECTOR

+61 400 854 212 | Mobile
benjamin.jones@lloydwarwick.com

[Click to View Web Profile](#)

Benjamin is a Director based in Sydney having spent several years in our London head office. Benjamin has a Masters degree in Mechanical Engineering and brings previous experience as an Engineer for Oil & Gas major Shell to this role, along with experience working on large and complex losses in the energy, mining, power generation and renewable energy sectors.



Peter Henry
B.ENG (NA) HONS., M.MGT.STUD
(PM), MRINA, C.ENG
SENIOR ENERGY & RESOURCES
ADJUSTER

+61 411 986 101 | Mobile
peter.henry@lloydwarwick.com

[Click to View Web Profile](#)

A chartered Engineer, Peter is a Senior Engineering Adjuster based in Sydney. With more than 10 years' engineering experience prior to becoming an Energy Loss Adjuster in 2014, Peter has managed complex onshore and offshore losses involving property damage, pollution, and ship repairer's liability globally, predominantly in LWI's Houston, Texas office. His areas of focus include Energy, Marine, Power, Mining, Renewables and Engineering risks.

Perth



Ian Clendenning
ACII, FCLA, CIP, FIFAA
MANAGING DIRECTOR

+61 429 058 507 | Mobile

ian.clendenning@lloydwarwick.com

[Click to View Web Profile](#)

A dual qualified Engineer and Chartered Loss Adjuster, Ian has had an international career in loss adjusting since 1985 and specialises in the investigation and quantification of claims from the Natural Resources and Construction sectors. Perth is a global resources hub but our access to domestic and international airlines allows us to respond to claims within Australia and internationally.



Paul Wittber
BENG, BSC, DIPBUS, ACLA,
ANZIIF, CIP, FIFAA
DIRECTOR

+61 452 522 173 | Mobile

paul.wittber@lloydwarwick.com

[Click to View Web Profile](#)

Paul has a double degree in Mechanical Engineering and Science, and is a Chartered Loss Adjuster. Having been based in Singapore, United Kingdom and Australia, Paul's areas of expertise include offshore and onshore energy construction and operational risks, mining and mineral processing, engineering, construction, utilities, subsea power cables, power generation and renewable energy.



Andrew Hodkinson
BE MECH (HONS), MIEAUST, CPENG,
ANZIIF (SNR ASSOC), FCLA
DIRECTOR

+61 458 585 999 | Mobile

andrew.hodkinson@lloydwarwick.com

[Click to View Web Profile](#)

Having worked in both Mining and Oil & Gas as an engineer, Andrew transferred to Loss Adjusting in 2000. Both a chartered Engineer and Loss Adjuster, Andrew services the Natural Resource and Construction sectors. He has managed complex onshore and offshore losses involving significant property damage and business interruption, primarily in the Australasian and African regions. His areas of focus include Mining, Energy, Power and Infrastructure risks.



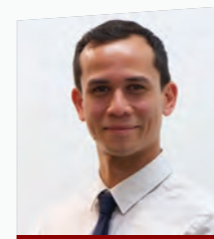
Nigel Lloyd
BE MECH, ACLA, ANZIIF
(SNR ASSOC), CIP
DIRECTOR

+61 458 067 412 | Mobile

nigel.lloyd@lloydwarwick.com

[Click to View Web Profile](#)

Nigel is a dual qualified Mechanical Engineer and a Chartered Loss Adjuster. Nigel has worked as a professional engineer in both the mining and offshore sectors, and has 10 years' experience working as a Loss Adjuster specialising in high value and complex claims emanating from the Engineering, Power, and Natural Resources sectors throughout Australia. Nigel has also been engaged as an Expert Witness in respect of various engineering insurance disputes.



Michael Cowley
BE CIVIL
NATURAL RESOURCES ADJUSTER

+61 437 380 003 | Mobile

michael.cowley@lloydwarwick.com

[Click to View Web Profile](#)

With 6 years of professional Civil Engineering experience, Michael joined LWI in 2023. His experience straddles both design and project management, involving Mining, Energy and Commercial projects located across the world. His recent focus was on major civil design works for the Western Australian iron ore sector, which included design of roads, stormwater and drainage, industrial structures, utilities, and earthworks; involving regular client engagement, contract interpretation and scheduling. Michael brings experience and skill to the adjustment of both construction and operational claims within the Natural Resource and Commercial sectors.



Alicia Colreavy
OPERATIONS MANAGER

+61 407 997 035 | Mobile

+61 8 61643060 | Office

alicia.colreavy@lloydwarwick.com

Alicia is an experienced operations and administration manager who is responsible for the support function to the adjusting business in Australia.



Contact



Alicia Colreavy



+61 8 61643060 | Office



alicia.colreavy@lloydwarwick.com



Ian Clendenning



+61 429 058 507 | Mobile



ian.clendenning@lloydwarwick.com

Connect



[lloydwarwick.com](https://www.lloydwarwick.com)



<https://www.linkedin.com/company/lloyd-warwick>



Part of the McLarens Group in Australasia & New Zealand

Following the acquisition of LWI by McLarens in June 2020, the LWI team has access to additional regional resources throughout Australasia and New Zealand as required.