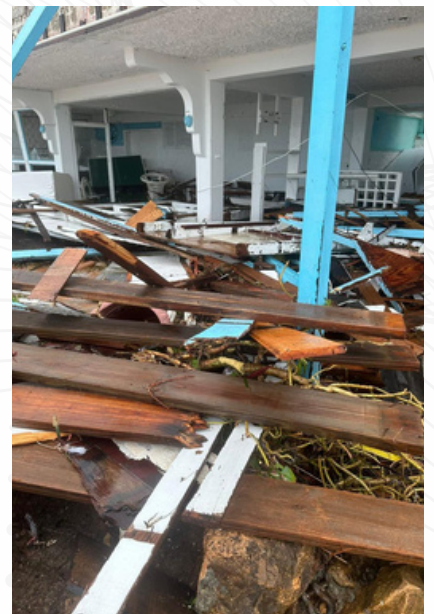
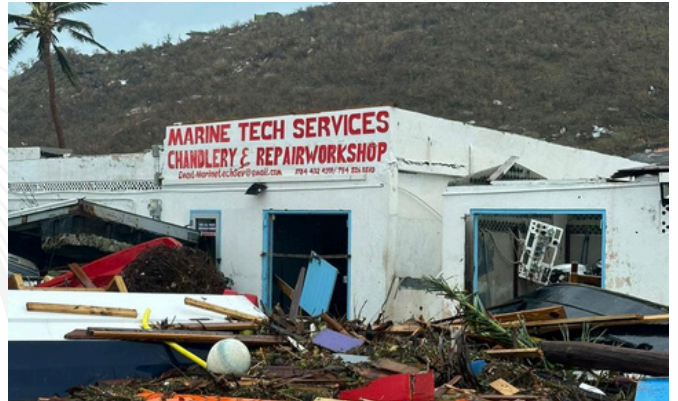




Hurricane Beryl Bulletin One



Beryl is the earliest on record CAT 5 Hurricane in the Atlantic, possibly caused by warmer sea surface temperatures, and has left great devastation across the Caribbean, taking just 42 hours to go from tropical depression to a major hurricane. Below are some quick updates on latest situation by islands affected by Beryl.

Tobago

- Only experienced tropical storm force gusts and limited damage reported.

Grenada

- Only the Northern Parishes off Grenada affected and with limited damage reported.

Carriacou

- Devastated, no power, no communications and restricted access. Easily 95% of properties affected, it is horrific – some of the worst damages since 1995 Hurricane Louis in Antigua.

Petite Martinique

- Population of about 900
- Devastated.

Union Island

- Devastated – 80 % of properties affected. Aid agencies are in, working environment extremely dangerous as there has been a breakdown in law and order.

Palm Island

- There's only a resort on the island and five privately owned villas, all of which have been hit hard.

Mayreau

- Devastated – 95% of properties affected and major damage.

Canouan

- Two resorts and a multitude of private villas were hit. One of the resorts has no CAT cover.

Mustique

- Private island - The damage has not been too bad and most of the losses may be within deductible due to the high sums insured.

Bequia

- Some claims, but lesser damage.

St. Vincent

- Some claims but all at this stage minor or within deductibles.

Transboundary Grenadines

