

McLarens Canada

McLarens,
McLarens Aviation
& LWI Canada

Quality is at the heart of our business

At McLarens, we have a passionate belief in quality loss adjusting, claims management and account handling. To provide you with quality services, we focus on the key elements of loss adjusting: people, communication, and prompt and cost-effective resolutions.

Our team of highly qualified adjusters understand the expectations of insurers, brokers, and policyholders. They draw upon their considerable claims experience and technical knowledge to deliver creative solutions.

By focusing on commercial and specialty lines, we concentrate on what we do best. With our combined services from McLarens, McLarens Aviation and Lloyd Warwick International (LWI) we deliver on our promises at the right place and at the right time.

Our clients describe us as **proactive, client focused, market leading and professional.***

*The most popular responses from our Annual Client Survey 2024 question 'If asked to describe the service from McLarens, what key words would come to mind?'

OUR VALUES

We live by a set of shared values that guide our actions and behaviours, and drive our culture and the way we do business:

Excellence

Teamwork

Respect

Knowledge

Thought Leadership

Accountability

CANADA TEAM

82% of staff have their CIP and/or FCIP designations

26 years of experience on average

100% of our clients said we understood their needs





Our relationship with McLaren's is excellent. Members of our team have had the benefit of training sessions to assist in obtaining accreditations.

Source: Annual Client Survey 2024.

- Agriculture including Cannabis
 - Construction
 - Infrastructure
 - Commercial
 - Manufacturing
 - Retail
 - HOA/Strata/Condominium
 - Fine Art & Specie
 - Pharmaceutical
 - Hotels, Sports & Leisure
 - Media
 - Natural Resources
 - Oil & Gas
 - Real Estate
 - Retail
 - Wholesale & Logistics
 - Film & Entertainment
- Event Cancellation
 - Non-Appearence
 - Theatrical Risks
 - Property
 - Liability
 - Performance Cancellation
 - Over Redemption
 - Prize Indemnity
 - Professional Liability
 - Wrap Up Liability
 - Commercial General Liability
 - Energy
 - Hydroelectric
 - Wind
 - Solar
 - Power Distribution
 - Onshore and Offshore Oil & Gas Upstream Production
- Pipelines (upstream and downstream)
 - Refining
 - Petrochemicals
 - Environmental Liability
 - Mining
 - Forestry
 - Sawmills
 - Pulp mills
 - Manufacturing plants
 - Power Generation
 - Conventional
 - Natural gas simple and combined cycle plants
 - Renewables (wind, solar, hydroelectric)
 - Nuclear

Specialties



McLarens Leadership

Canada Office Locations

Managing Directors



James Giffen
CASUALTY TEAM LEAD
+1 416 727 4927
james.giffen@mclarens.com
[Profile](#)



Shawn Burnett
ENERGY TEAM LEAD
+1 416 817 6313
shawn.burnett@mclarens.com
[Profile](#)



Shawn Malik
PROPERTY & CONSTRUCTION
TEAM LEAD
+1 416 524 7089
shawn.malik@mclarens.com
[Profile](#)

Entertainment Lead



Neil Gibson
EXECUTIVE GENERAL
ADJUSTER
+1 416 302 5952
neil.gibson@mclarens.com
[Profile](#)

TPA Manager



Richard Barnsdall
TPA/DELEGATED
AUTHORITY MANAGER
+1 905 431 8688
richard.barnsdall@mclarens.com
[Profile](#)



Global Scale, Local Execution

- | McLarens | McLarens Aviation | LWI |
|-------------------------------|-------------------------------|--------------------|
| • Vancouver, British Columbia | • Vancouver, British Columbia | • Calgary, Alberta |
| • Kelowna, British Columbia | • Calgary, Alberta | |
| • Calgary, Alberta | • Toronto, Ontario | |
| • Edmonton, Alberta | • Montreal, Quebec | |
| • Toronto, Ontario | | |
| • Ottawa, Ontario | | |
| • Montreal, Quebec | | |

The aviation division is the world's leading provider of aviation loss adjusting services.

Our unrivalled worldwide network of offices delivers exceptional claims management service to the global aviation industry, providing solutions whenever and wherever an aviation loss occurs.

McLarens Aviation have been established in the Canadian market for 40 years, led by Managing Director Wayne Donald the team comprises of seven licensed adjusters and three surveyors with offices in Montreal, Toronto, Calgary, and Vancouver.

Claims Management – Hull (Airline and General Aviation)

- Damage Surveys (Aircraft and Engine)
- Aircraft Recovery Coordination

- Site Restoration
- Repair Cost Adjustments
- Cause Investigations
- Salvage Services
- Environmental Impact Assessments

Claims Management - Liability

- Airport Operators Liability
- Ground Handlers Liability
- Passenger & Third-Party Liability

Risk and Asset Management

- Risk Assessment Strategy
- Asset Lifecycle
- Airworthiness
- Aircraft/ Powerplant Maintenance
- Operational and Technical Reviews

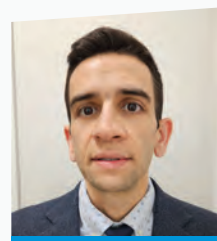
McLarens Aviation Leadership



Wayne Donald
MANAGING DIRECTOR
+1 514 231 1436
wayne.donald@mclarens.com
[Profile](#)



Tim Pickett
AVIATION DIRECTOR
+1 905 242 5510
tim.pickett@mclarens.com
[Profile](#)



Fernando Domingues
CLAIMS MANAGER
+1 437 213 2140
fernando.domingues@mclarens.com
[Profile](#)



Our Culture and Collaboration

Our offices are designed to enable the collaborative management of claims with Insurers and Insureds to facilitate the settlement of major and complex losses. Our technical adjusting staff function as strategic loss managers, offering security and confidence that every aspect of large claims will be planned, organized, and executed at the highest levels of industry, technical, and regulatory standards.

We efficiently attend remote sites involving complex or large loss regardless of location. In addition, our world-wide base of resources gives us the capacity and capabilities to handle concurrent complex losses.

We ensure excellent communication between all parties by being transparent and sharing all relevant information. Additionally, structured reserve presentations, cash flow tracking and interim payment forecasting help improve decision making and ultimately reduce the cost of claims. Utilizing state-of-the-art technology and systems, we take great pride in our document management and dissemination of information to interested parties.

We earn our customers' confidence through our expertise, innovation, performance and integrity and seek long-term partnerships. Please feel free to reach out to any of our Adjusters for further information.



Our Claims Experience has Included the Following Assets

Mining

- Heap Leach Pads
- Open pit haul roads
- Underground collapses
- Equipment
- Tailings dams
- Heavy mobile plant
- Rail & port

Oil & Gas

- Upstream
 - Drilling and Control of Well
 - Fracturing and pumping
 - Batteries and lease sites
 - Gathering Pipelines
- Downstream
 - Gas Processing Plants
 - Refineries
 - Transmission pipelines
 - Carbon Capture & Storage

Pollution Liability

- Blowouts and Control of Well
- Upstream facilities
- Gathering and transmission pipelines

Power Generation (Traditional and Renewable)

- Conventional Thermal Plants (boilers, turbines and generators)
- Combined and simple cycle power stations (gas turbines, generators)
- Nuclear power stations
- Transmission lines, distribution lines and Transformers
- Substations
- Hydroelectric (dams, run of river)
- Wind and solar farms
- Battery Storage Facilities

Forestry

- Sawmills
- Pulp & Paper Mills
- OSB Plants
- Equipment

Misc. Engineering & Industry

- Heavy equipment
- Infrastructure
- Expert witness reviews
- Rail transport

LWI Leadership



Dallas Hirsche

MANAGING DIRECTOR


+1 403 681 2664

dallas.hirsche@lloydwarwick.com

[Profile](#)



McLarens

 +1 416 593 4444


 canadmin@mclarens.com

McLarens Aviation

 +1 450 672 6090

 canada.aviation@mclarens.com

LWI

 +1 825 882 0242

 calgary@lloydwarwick.com

